

E-PLEX™
5 0 0 0



E-Plex™ 5000
Power up your access control.





POWER UP.

E-PLEX™ Built on over 40 years of pushbutton lock experience, the new E-Plex 5000 by Kaba combines the strength, simplicity and reliability of our industry leading Simplex® locks with the enhanced security and

convenience of electronic access control. The E-Plex 5000 is ideal for securing sensitive access points in multiple settings, especially locations with high user turnover. You'll appreciate fully audited access control without the costs

and problems of issuing, managing and collecting keys or magnetic cards. It's never been easier to power up your access control.



- **Simple to install, use and maintain**
- **Requires no wire through the door**
- **100 access codes**
- **Extensive audit trail**
- **Programmable passage mode**
- **Optional easy-to-use Excel™ based software**
- **Three-year warranty from lock activation date**
- **ANSI/BHMA grade 1 compliant**

FINISH OPTIONS



SATIN CHROME



SATIN BRASS*



BRIGHT BRASS*

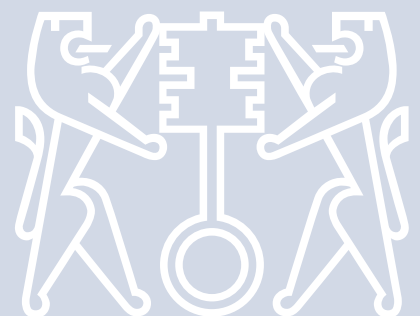


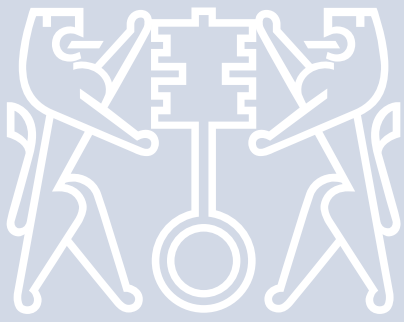
BLACK



DURANODIC

* LIFETIME FINISH





Easy to manage

Users and locks can be controlled at the door or with optional, easy-to-use Microsoft Excel™ based software. The software provides manageable control as your facility's number of users and access points grow. User additions and deletions are completed quickly. Each access code is assigned one of five authority levels that specify who has access to various lock functions.

- Each site is assigned one Master level – the remaining 99 codes can be set to Manager, User, or Service levels. Service level can be programmed for access once, or unlimited entrance for a period of one to 24 hours – ideal for service personnel, meeting rooms, and rental space.

User-friendly

Audio and visual indicators can be set to notify users when access is granted or denied. Unique, yet convenient pushbutton design deters code stealing over traditional telephone style keypads. Lock features ADA-compliant levers.

Flexible

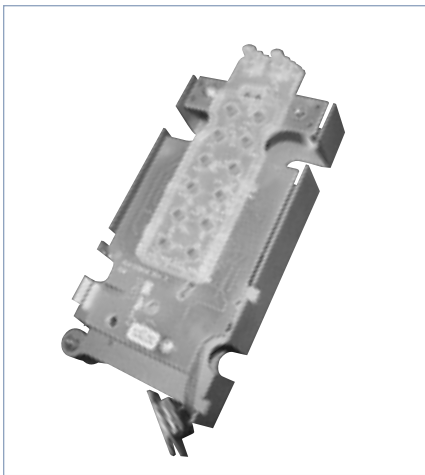
Three easy to set operation modes – combination “PIN” entry, passage, and lockout – give you the flexibility to control your facility's entry requirements according to your security needs during the business day and beyond.

Variety of key override formats fit existing master key systems – key-in-lever, interchangeable and removable core options. Passage can be set on or off, or programmed to relock after a specified period.

Customizable user parameters

User access codes can be set from four to eight digits. The time interval between combination entry and relock is variable from 2 to 20 seconds. The anti-tamper feature disables the lock after multiple invalid combination entries – set for between three to nine attempts and up to 90 seconds.





Pictured Above: Fully contained electronics module in exterior housing eliminates repair hassles.

Easy to maintain

Durable heavy-duty construction requires minimal maintenance. Visual indicators alert you when battery is low.

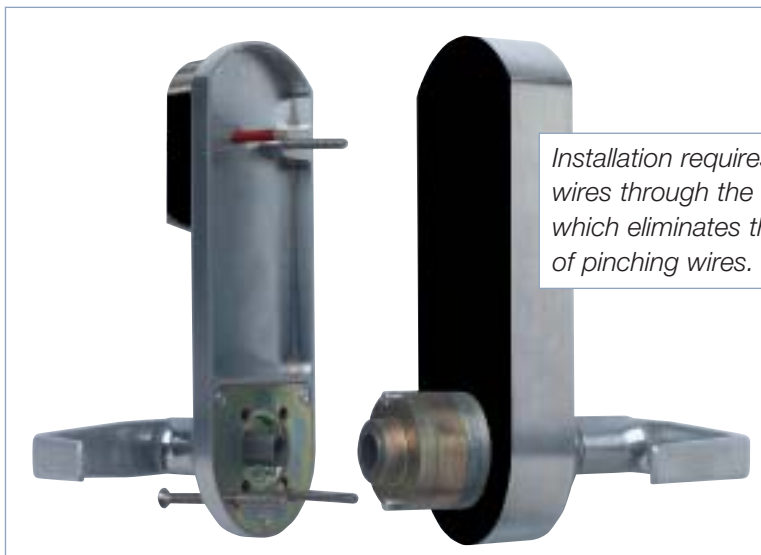
Three-year warranty. Built-in warranty counter begins on date of lock activation.

Efficient design provides up to 180,000 cycles for battery life.

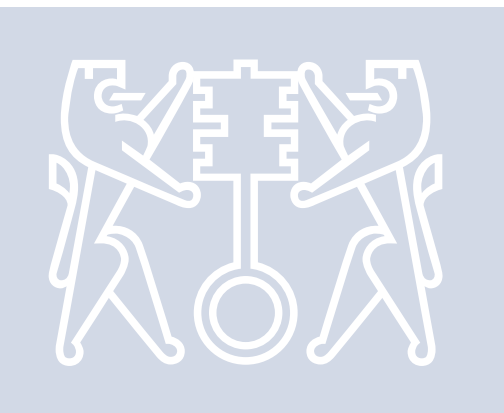
Easy to install

The lock installs easily on wood or metal doors and provides a quick and simple retrofit to any standard 161 cylindrical door prep. A non-handed design easily accommodates both left- and right-hand doors.

Lock accommodates both indoor and outdoor applications.



Installation requires no wires through the door, which eliminates the risk of pinching wires.



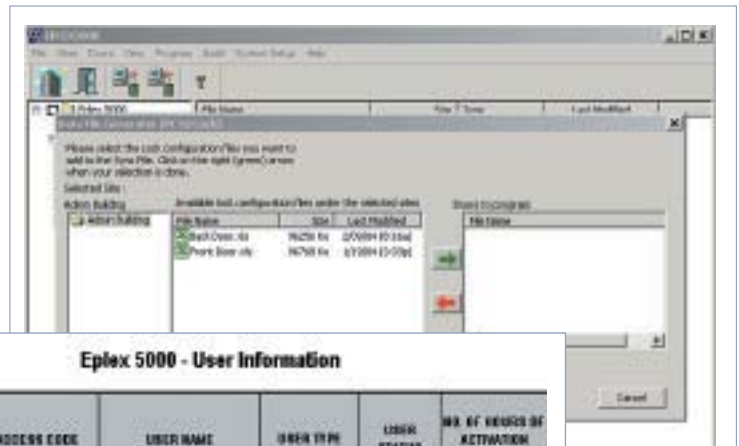
Optional E-Plex software

Easy-to-use point & click Microsoft Excel™ based software requires no specialized knowledge to operate. Software manages up to 100 enrolled access codes per door and up to 10,000 doors. Manage multiple sites with one software package.

- Users and doors can be added, deleted, and suspended quickly
- Predefined spreadsheet templates simplify setup and data input
- Lock settings and user information are easily cloned – permitting quick multi-lock setups

User-friendly software easily guides you through lock setup and functions, such as adding users and doors, and establishing authority codes.

- User information can be imported from existing databases and spreadsheets
- Password protection ensures integrity of data



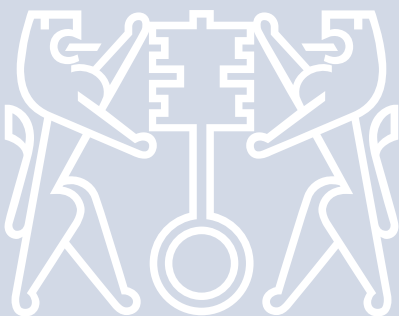
Eplex 5000 - User Information

USER NUMBER	ACCESS CODE	USER NAME	USER TYPE	USER STATUS	NR. OF HOURS OF ACTIVATION (SERVICE USER)
001	1234	Sarah Turner	Access User	ENABLED	
002	5678	Michel Demban	Access User	ENABLED	
003	3030	Mark Brown	Access User	ENABLED	
004	8678	Sue Stone	Access User	ENABLED	
005	9843	Jim Clark	Access User	ENABLED	
006	7650	Giovanni Dryder	Access User	ENABLED	
007	7777	Jane Johnson	Service User	ENABLED	5
008				ENABLED	
009				ENABLED	
010					
011					
012					
013					
014					

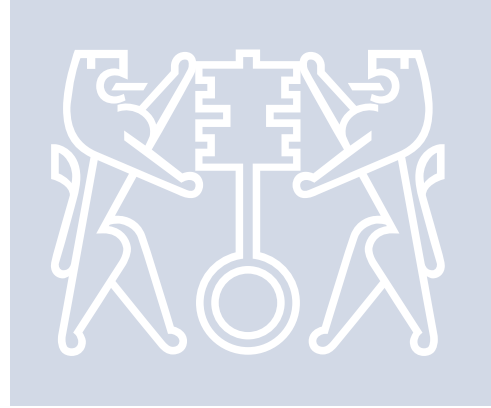
Eplex 5000 LOCK CONFIGURATION

LOCK ID: 1001 LOCK NAME: Main Entrance

DOOR INFORMATION			
LOCK CONFIGURATION	VALUE	UNIT	RANGE
UNLOCK TIME	3	SECONDS	2 to 25
BELLER VOLUME	1	LEVEL	0 to 3
TRIPPER COUNT	8	ACTIVATIONS	3 to 3
TRIPPER SHUTDOWN TIME	18	SECONDS	0 to 18
PASSAGE MODE OPEN TIME LIMIT	7	HOURS	1 to 34
ACCESS CODE LENGTH	4	DIGITS	4 to 8



KABA		E-Plex 5000 LOCK AUDIT					
		DATE OF REPORT:	07/29/04 10:20:11				
LOCK HEADER							
LOCK NAME:	Admin - Employee Entrance	LOCK ID:	1008				
FILE NAME:	JUL29 2004 108 2004 115 _ab	EVENTS:	425				
		FW Version:	1.10				
		Lock Battery:	Good				
LOCK RECORDS INFORMATION							
DATE	TIME	TRANSACTION DESCRIPTION	USER #	USER ACCESS CODE	USER NAME	USER TYPE	USER STATUS
7/29/04	11:19:57 AM	RFID communication started	N/A	***	Master Code	Master Code	N/A
7/29/04	11:19:58 AM	Manual programming started	N/A	***	Master Code	Master Code	N/A
7/29/04	11:19:59 AM	Lock opened on valid access code	N/A	***	Master Code	Master Code	N/A
7/29/04	11:18:57 AM	Field reset	N/A	N/A	N/A	N/A	N/A
7/29/04	11:18:48 AM	Key override usage detected	N/A	N/A	N/A	N/A	N/A
7/29/04	11:17:48 AM	Invalid code entered	N/A	00002459	N/A	N/A	N/A
7/29/04	11:06:47 AM	Lock opened on valid access code	010	00007213	John Campbell	Access User	Enabled
7/29/04	11:06:06 AM	Lock opened on valid access code	004	00000357	Carol Thomas	Manager User	Enabled
7/29/04	11:04:55 AM	Lock opened on valid access code	003	00001241	Colleen Wilson	Service User	Enabled
7/29/04	11:04:05 AM	Lock opened on valid access code	004	00001524	Charles Ward	Access User	Enabled



Communication

No cables are needed to upload and download your data – communicates through infrared data transfer function of a handheld PDA (personal digital assistant). Simply aim the data transfer window at your lock and receive visual confirmation when complete.

The PDA battery gauge feature can be used to quickly test the lock's battery life status without accessing batteries – just point and click.



Extensive audit trail

Records and saves the last 3,000 lock events – even mechanical key override use – to provide user accountability. Audit information is downloaded to Excel spreadsheets for analyzing, sorting, or printing. Spreadsheet design allows you to sort according to your information needs – unlike the "canned" pre-programmed audit in most access systems.



Solutions for every access point



With over 40 years of proven reliability, Simplex mechanical pushbutton locks continue to offer a convenient way to control access between public and private areas. There are no keys to manage, no computers to program, and combinations can be changed in seconds without removing the lock from the door.

- Keyless convenience
- Easy to maintain
- Easy to install – no wiring or computers
- Easy to manage



Peaks patented key control systems grant access according to your security requirements, while giving you complete control over key duplication. Authorization is required to order cut keys, key blanks and key cylinders, and patents prohibit other manufacturers from making blanks.

- Patented keys are the foundation of facility security – use in key override to increase mechanical and electronic lock security
- Patented design prevents unauthorized key duplication
- Cost effective – replace only the cylinder, not the hardware
- Industry leader in compatibility with all major hardware brands



The self-powered PowerLever PROX 9000 lock combines PIN code access with prox card technology to provide increased security through the use of dual credential access. Four flexible operation modes – single credential, dual credential, passage and lockout – give you the power to easily control entry according to your security requirements.

- Self-powered – unique PowerStar™ technology generates power each time you turn the lever – no batteries to replace
- Up to 3,000 individual users
- Extensive audit trail records the last 30,000 access events
- Easily add doors to an existing online system without the significant expense of running wire to the door

Made in the
USA